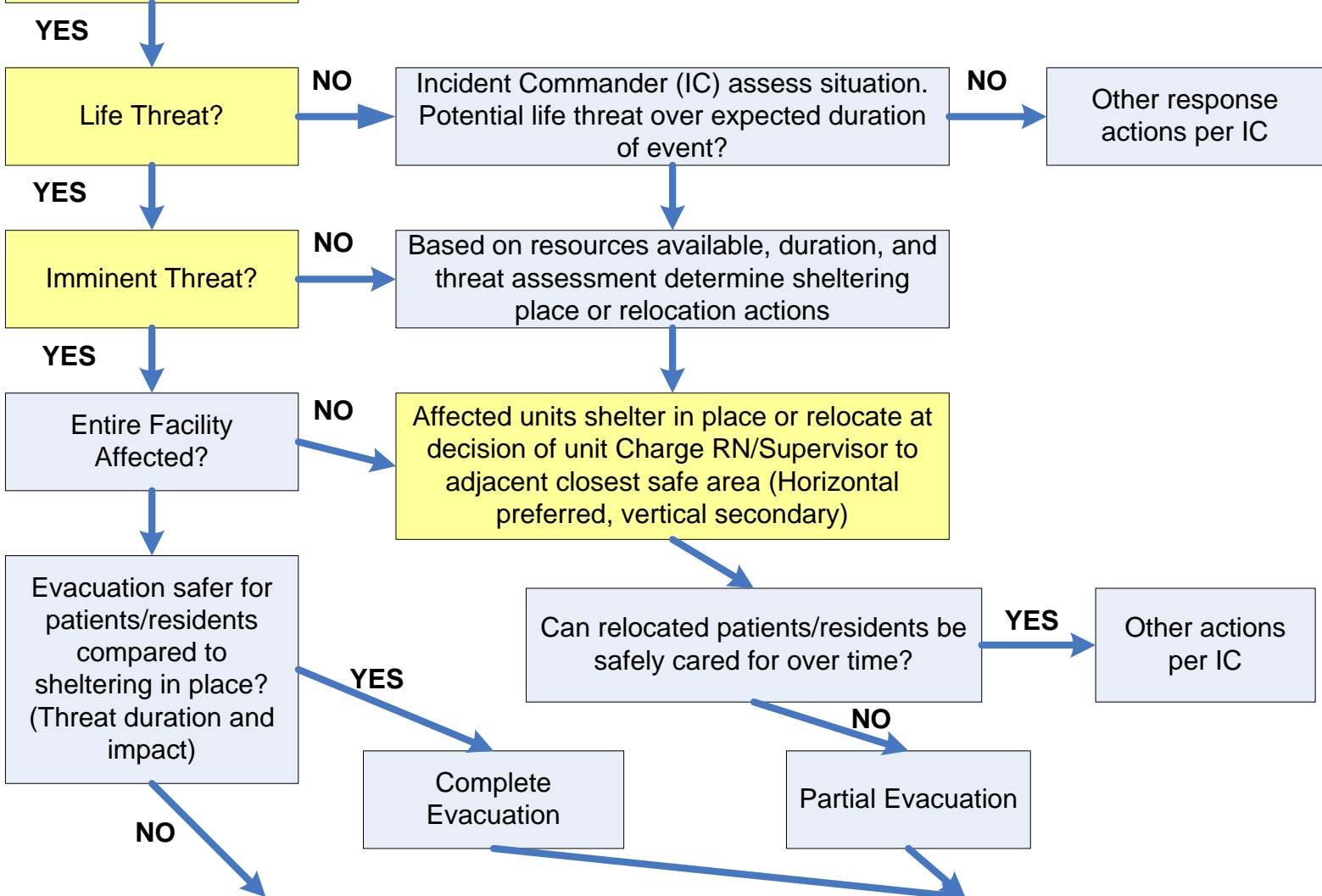


Emergency Identified,
Initial Size-Up
Complete

NOTE: Shaded Boxes = Unit Level Decisions
Clear Boxes = IC Level



Shelter in Place – Proactive Actions:

- 1) Weather – close drapes, move away from windows, announce to staff/visitors
- 2) HAZMAT – Changes to ventilation supply/exchange, access controls
- 3) Security (bomb, shooting, civil unrest) – access controls, doors/curtain closures, take cover actions if needed

Evacuation (See unit evacuation guide and facility checklist for detailed guidance) :

- 1) Notifications – Internal/external (EMS, RHRC also)
- 2) Access controls and supplemental security
- 3) Staging/transport areas identified
 - a) Staffing – triage, loaders
 - b) Supplies – water, crash cart, food, linens
- 4) Unit tracking/triage for transport
- 5) Medical records (see unit evacuation guide)
- 6) Visitors and staff accountability
- 7) Patient/resident movement – ambulatory, step down, stable, non-ambulatory, critical in order to staging, reverse for transport
- 8) Clear units
- 9) Facility shut down / stay team